



COMPES da sempre è attenta, oltre che alla Qualità, anche ai temi di Sicurezza dei Lavoratori e di Gestione Ambientale. Non a caso è stata la prima del settore in Europa ad ottenere le 3 certificazioni ISO 9001, ISO 14001, OHSAS 18001.

COMPES has always paid attention to Quality, but also to the themes of Workers Safety and Environmental Management. It is not by chance that the company was the first in the industry in Europe to achieve 3 certifications: ISO 9001, ISO 14001, OHSAS 18001.

COMPES hat immer auf Qualität geachtet, aber auch auf die Themen Arbeitssicherheit und Umweltmanagement. Es ist kein Zufall, dass das Unternehmen in Europa das erste in der Industrie war, um 3 Zertifizierungen zu erreichen: ISO 9001, ISO 14001, OHSAS 18001.

COLT

COMPES ON LINE TECHNICAL SUPPORT

COLT is a system for orders management

SENDRA®

SEARCH ENGINE FOR DRAWING

SENDRA © is a search engine for profiles geometries



via Castegnato, 6/C - 25050 Rodengo Saiano - Brescia Italy T +39 030 6815011 - F +39 030 611848 info@compes.com - www.compes.com

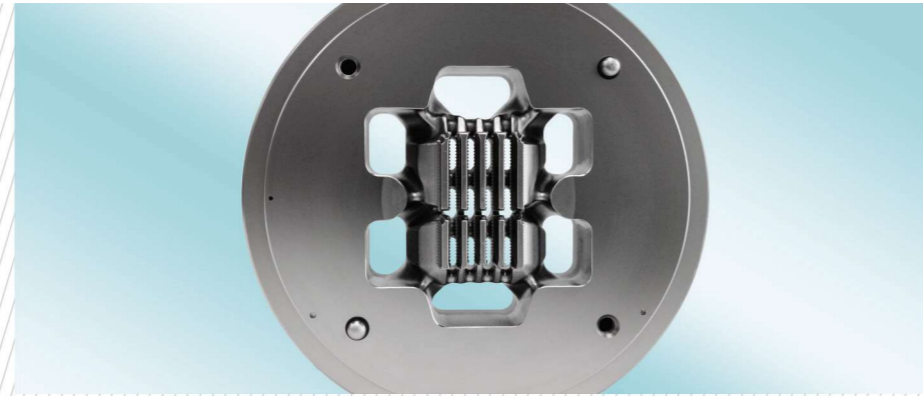


EXTRUSION SOLUTIONS

CO.M.P.E.S. SpA, nata nel 1972, rappresenta l'eccellenza in Europa e nel mondo per le matrici per l'estrusione dell'alluminio. Il core business dell'azienda sono appunto le matrici, la cui progettazione e lavorazione è totalmente effettuata in Italia. COMPES avanti sempre un passo nella ricerca e innovazione è stata la prima del settore ad utilizzare la modellazione solida per lavorazioni a 3 e 5 assi, prima a partecipare allo sviluppo e ad inserire nel processo produttivo software per la simulazione dell'estrusione con la conseguente riduzione del numero di prove e del miglioramento della produttività.

CO.M.P.E.S. SpA, founded in 1972, represents excellence in Europe and in the world for aluminium extrusion dies. The core business is represented by dies, whose design and manufacture takes place totally in Italy. COMPES, always one step ahead in research and innovation, has been the first in the industry to use solid modelling for 3- and 5-axis machining, first to participate in the development and to include in the production process software for extrusion simulation with the consequent reduction of tests number and productivity improvement.

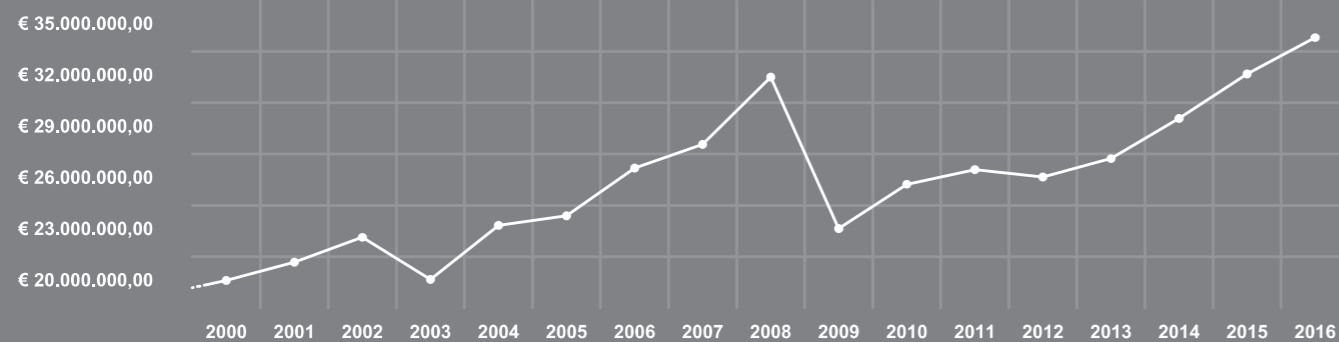
Die 1972 gegründete CO.M.P.E.S. SpA repräsentiert sich exzellent in Europa und weltweit mit Aluminium-Extrusionswerkzeugen. Das Kerngeschäft wird durch Werkzeuge repräsentiert, deren Design und Fertigung vollständig in Italien stattfinden. COMPES, immer ein Schritt voraus in Forschung und Innovation, war der erste in der Branche, der solide Modellierung für 3- und 5-Achsen-Bearbeitung verwendet hat. Zunächst in der Entwicklung von Produktionsprozess-Software für die Extrusionssimulation mit dem consequenten Reduzierung der Anzahl von Proben und die Produktivitätsverbesserung.



Grazie alla capacità imprenditoriale dei titolari, a quelle dei propri tecnici in particolare dei commerciali che hanno contribuito in modo fondamentale all'espansione del mercato e al consolidamento di una qualificata clientela, oggi COMPES rappresenta un punto di riferimento e partner affidabile dei maggiori gruppi di estrusori dell'alluminio nel mondo.

Thanks to the entrepreneurial skills of the owners, to those of the engineers and in particular the sales managers that contributed fundamentally to the expansion of the market and the consolidation of a qualified clientele, today COMPES is considered a landmark and a reliable partner of the major aluminium extruders groups all over the world.

Dank der unternehmerischen Fähigkeiten der Eigentümer, denen der Ingenieure und insbesondere der Vertriebsleiter, die grundsätzlich zum Ausbau des Marktes und zur Konsolidierung einer qualifizierten Kundschaft beigetragen haben, gilt COMPES heute als Wahrzeichen und als verlässlicher Partner der großen Aluminium-Extruder-Gruppen auf der ganzen Welt.



DCS 400



DCS 1200



DRM



OVEN

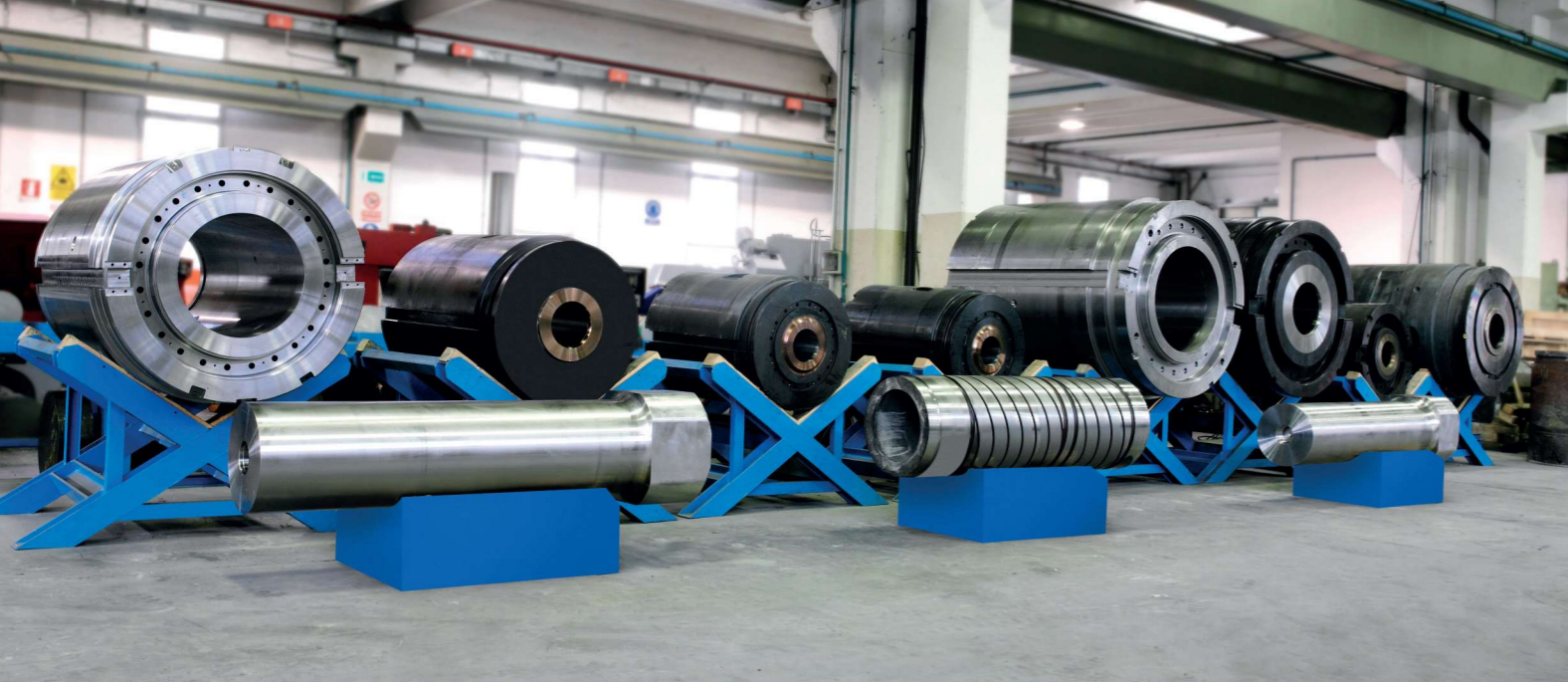


COMPES progetta e commercializza macchine per agevolare il lavoro degli operatori nei reparti di correzione e produzione, garantendo contemporaneamente sicurezza, risparmio energetico e contenimento dei costi.

COMPES designs and markets equipment to facilitate the work of operators in the correction and production departments, while ensuring safety, energy savings and cost containment.

COMPES entwirft und vermarktet Maschinen, um die Arbeit der Mitarbeiter in den Korrektur- und Produktionsabteilungen zu erleichtern und gleichzeitige Sicherheit, Energieeinsparung und Kosteneinsparung zu gewährleisten.

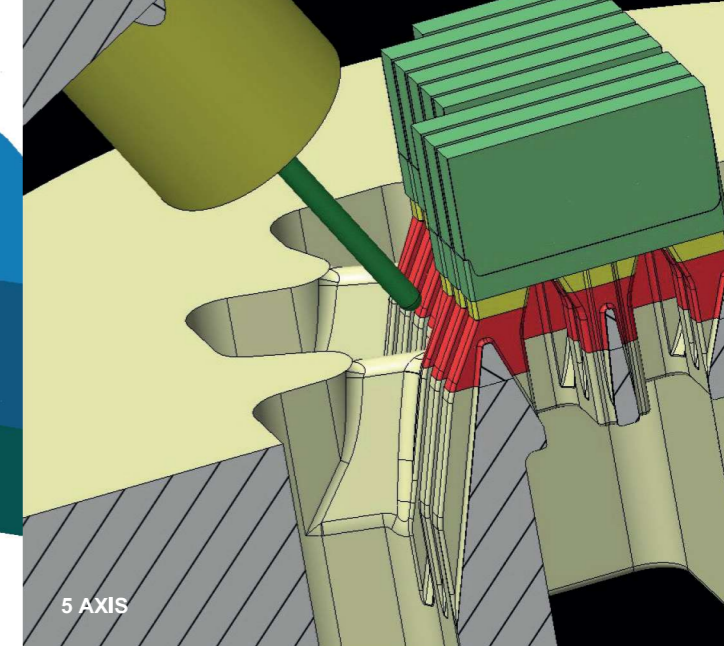
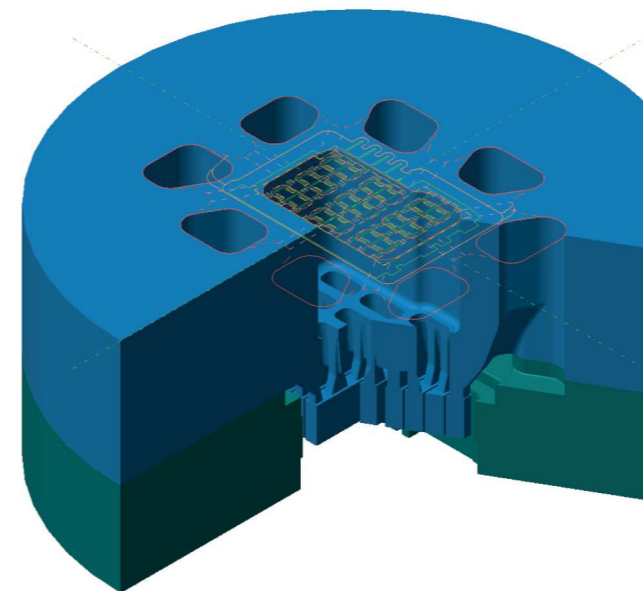
DCM



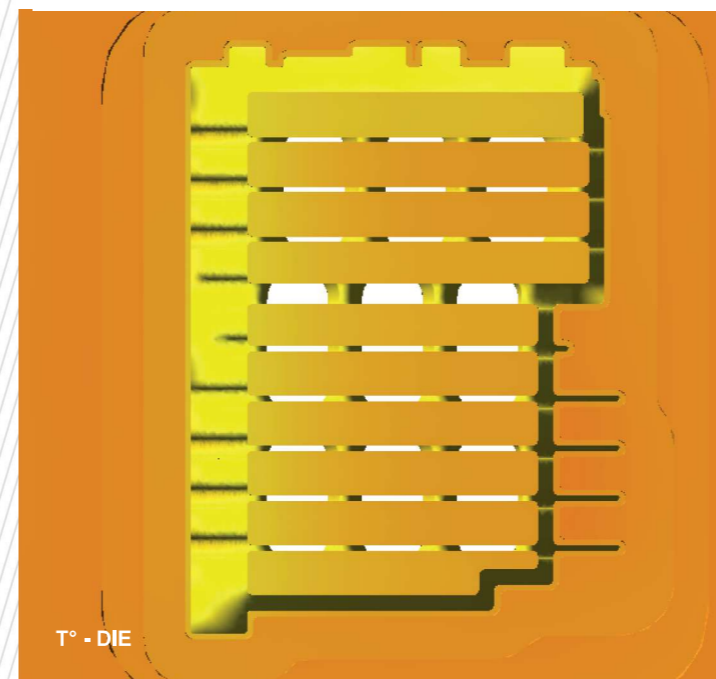
Sono clienti ormai consolidati tutti i più quotati costruttori di presse a livello mondiale, ai quali COMPES fornisce come parte integrante della propria produzione : contenitori, bussole, punzoni, colonne, tacchi pressatori e pulitori ecc.

All the most renowned worldwide presses manufacturers are now consolidated guests to whom COMPES provides as part of its production: containers, liners, pistons, columns, dummy and cleaning blocks, etc.

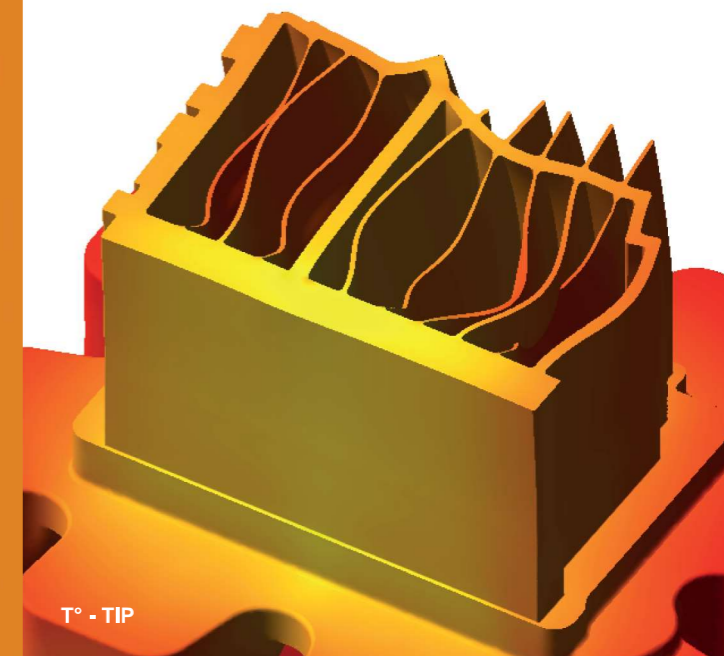
Alle renommiertesten weltweiten Pressenhersteller sind nun konsolidierte Gäste, denen COMPES als Teil seiner Produktion zur Verfügung steht: Rezipienten, Büchsen, Stempel, Säulen, Dummy- und Reinigungsblöcke usw.



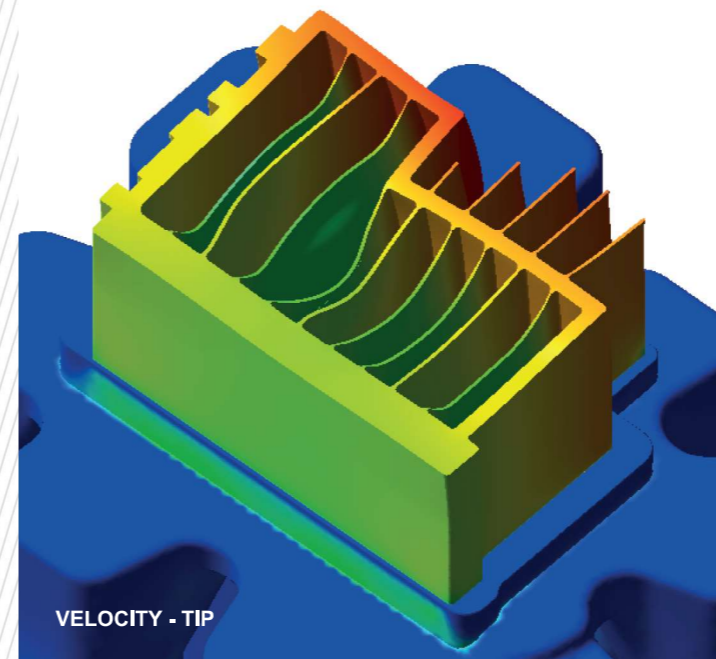
5 AXIS



T° - DIE



T° - TIP



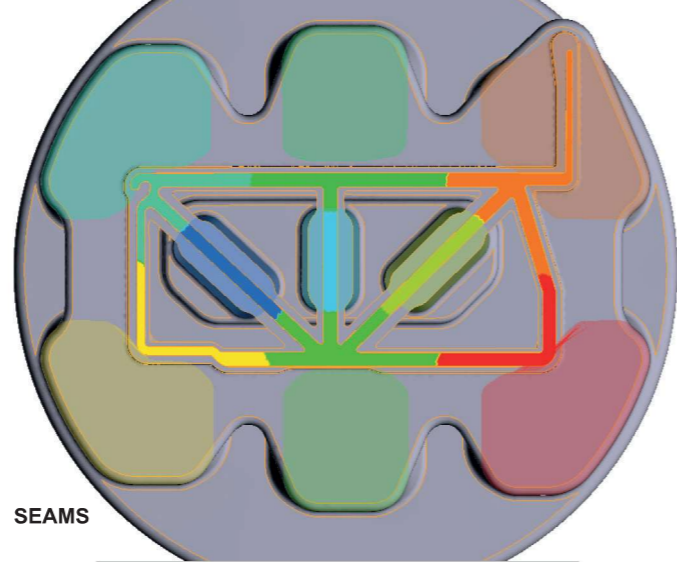
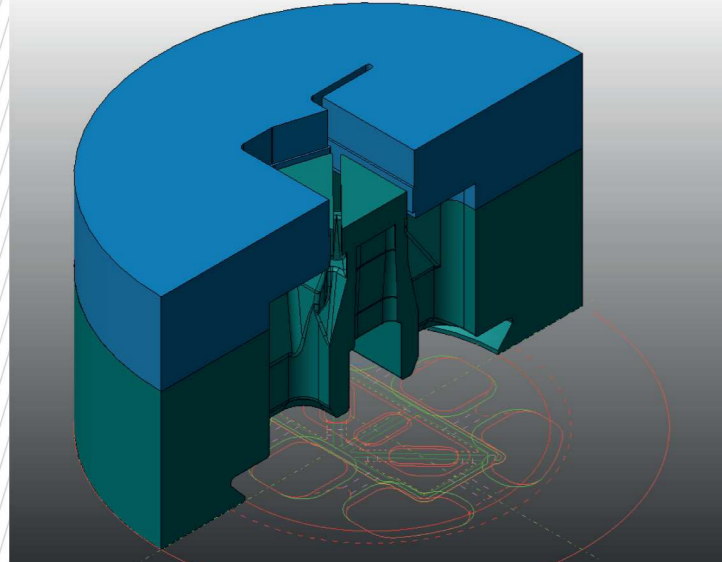
VELOCITY - TIP



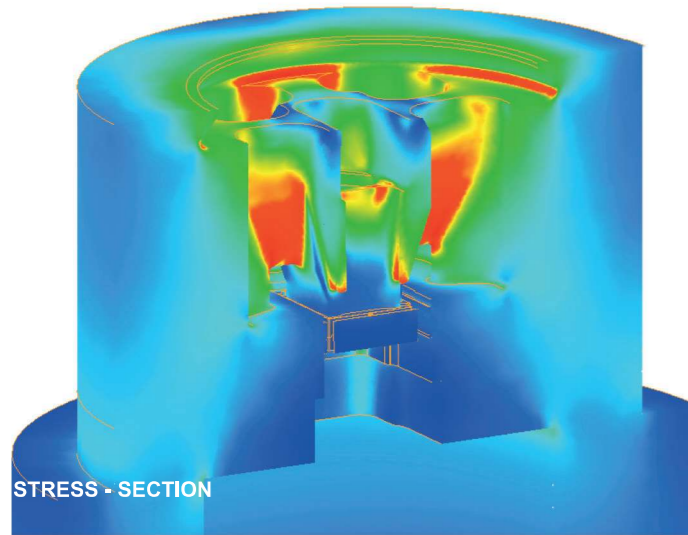
Progettazione, simulazioni, prodotto

Design, simulations, product

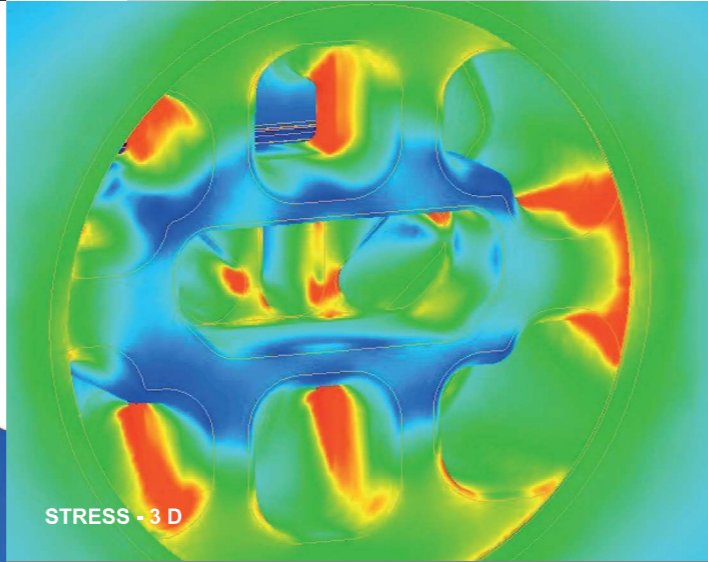
Konstruktion, Simulation, Produkt



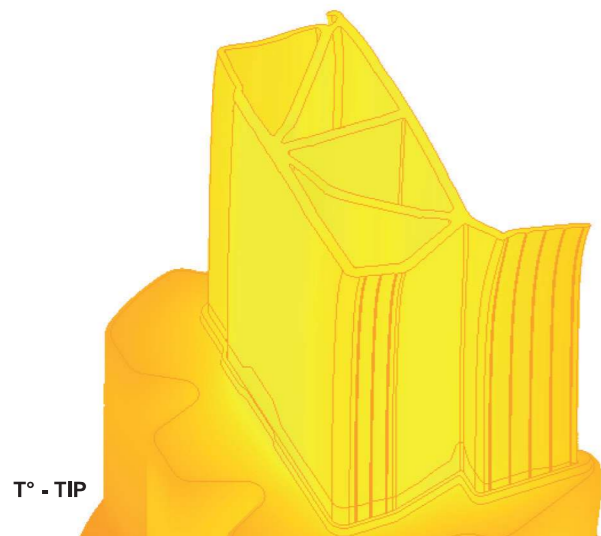
SEAMS



STRESS - SECTION



STRESS - 3 D

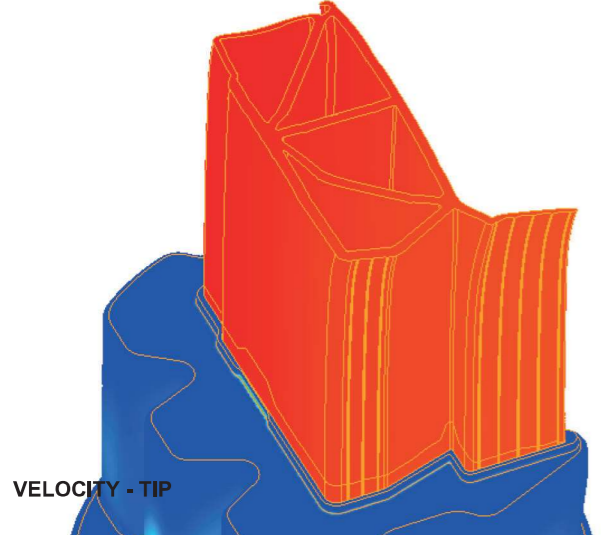


T° - TIP

Dalla modellazione solida all'estruso passando per la simulazione dell'estrusione, la verifica dei punti di saldatura, i valori delle temperature, la verifica delle sollecitazioni sulla matrice.

From the solid modelling to the extrusion through the extrusion simulation, verification of the welding points, the temperature values, the verification of the stresses on the die.

Von der Werkzeug Modellierung bis zur Extrusion durch die Extrusionssimulation, Verifizierung der Schweißpunkte, die Temperaturwerte und die Verifizierung der Belastungen auf das Werkzeug.



VELOCITY - TIP

